



Plant Select®
plant smarter

DENVER BOTANIC
GARDENS

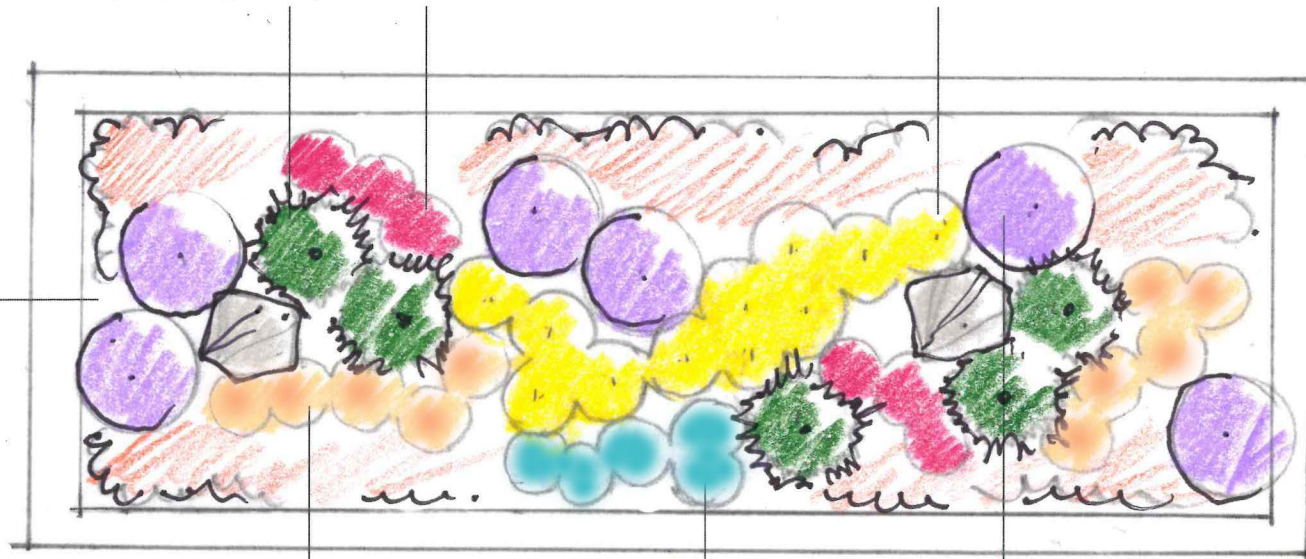
Designed by: Annie Barrow
Manager, Horticulture Outreach
Programs
annie.barrow@botanicgardens.org

Blue Jazz
pinyon pine (5)

Moroccan
pincushion flower (6)

Engelmann's
daisy (11)

Groundcover:
Veronica
OR
Delosperma*



Dalmatian
daisy (10)

Silverheels
horehound (5)

Shangri-la
sage (6)

*Mix of Veronica CRYSTAL RIVERS™ & SNOWMASS® or Delosperma Granita® Raspberry & Granita® Orange

RIGHT OF WAY PLANTING DESIGN

Scale 1/4"=1'
Exposure: Full to part sun



RIGHT OF WAY PLANTING DESIGN 24' X 8'

This low maintenance, full sun design is a display of colorful steppe region plants that embodies effortless natural beauty.

PLANT LIST:

Blue Jazz dwarf pinyon pine (5)

Moroccan pincushion flower (6)

Engelmann's daisy (11)

Groundcovers in mass, CRYSTAL RIVER® & SNOWMASS® or GRANITA® Raspberry or Orange ice plants (2 flats)

Dalmatian daisy (10)

Silverheels horehound (5)

Shangri-la sage (6)

Hardscape use of 2-5 stones or a broadleaf evergreen such as Panchito manzanita

Visit www.PlantSelect.org/where-to-buy/ to source Plant Select plants or email Director@PlantSelect.org with questions.