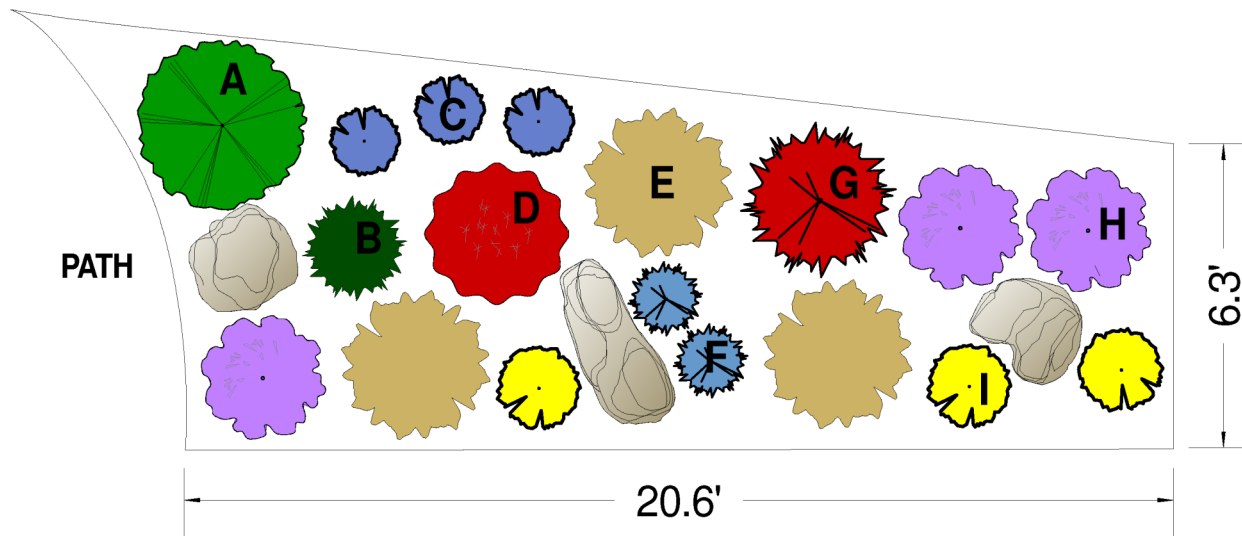


# SIMPLE SOLUTIONS FOR SMALL SPACES

Waterwise designs created for smaller areas of your landscape.  
For larger areas, repeat the design for whatever length is necessary.

## DRIVEWAY XERISCAPE BORDER

This garden is loaded with color and texture, interweaving silver foliage with the soft feathery seed heads of blue grama grass. Attractive from all sides, your neighbors can enjoy it as well. Included are long blooming and ever-green plants providing four-season interest. Chocolate flower is placed near the sidewalk for passers-by to enjoy the lush fragrance. They, along with Colorado desert blue star and dwarf pinyon pine, are nestled up against moss rock. The garden is a pollinator habitat, attracting bees, butterflies and hummingbirds. All plants are sun-loving and drought tolerant once established and will do best in a well-drained soil.



## SIMPLE PLANT LIST:

- A. Fernbush (1)
- B. Dwarf pinyon pine (1)
- C. LITTLE TRUDY® catmint (3)
- D. VERMILION BLUFFS® Mexican sage (1) -or- Red yucca
- E. Blonde Ambition blue grama grass (3)
- F. Colorado desert blue star (2)
- G. Red yucca (1)
- H. Mojave sage (3)

SIMPLE.  
SMART.  
STUNNING.

