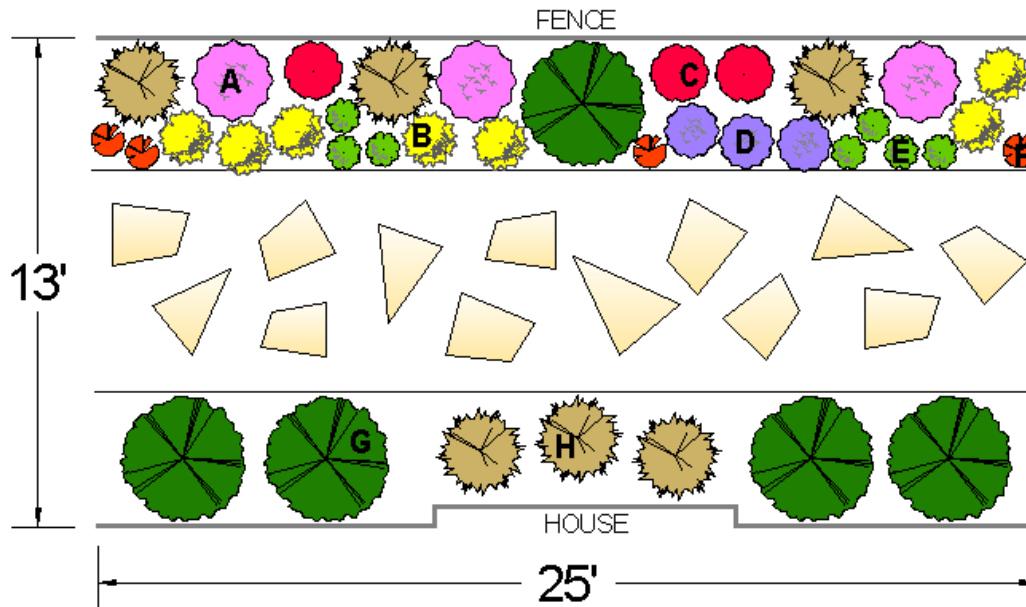


# SIMPLE SOLUTIONS FOR SMALL SPACES

Waterwise designs created for smaller areas of your landscape.  
For larger areas, repeat the design for whatever length is necessary.

## BETWEEN THE HOUSES GARDEN

Shady areas are often the most difficult to design for in the West. This garden is loaded with bold color and is perfect for areas between two homes in a north-south facing location, or a border that only receives dappled shade. Ideally, the garden should receive at least 3-4 hours of sunlight. Most of the plants are adaptable to many soil types and handle dry conditions once established. Denver Gold<sup>®</sup> columbine and Snow Angel coral bells perform best with some extra water during dry spells. The coral bells and viburnum thrive in loamy soil - amendments should be added to clay soils at planting time.



## SIMPLE PLANT LIST:

- A. Cashmere sage (3)
- B. DENVER GOLD<sup>®</sup> columbine (7)
- C. Red birds in a tree (3)
- D. SHADOW MOUNTAIN<sup>®</sup> penstemon (3)
- E. Snow Angel coral bells (7)
- F. Hummingbird trumpet mint (4)
- G. Mini Man<sup>™</sup> dwarf Manchurian viburnum (5)
- H. Korean feather reed grass (6)

Once established, fill in any empty spaces with Corsican violet.

SIMPLE.  
SMART.  
STUNNING.



**Designer Carla Tews**

Carla Tews is the owner/operator of Green Roots Garden Design. As a horticulturist, garden designer and conservationist, she focuses on building sustainable landscapes and pollinator-friendly habitats for residential and commercial clients along the northern Colorado Front Range.

[www.greenrootsgardendesign.com](http://www.greenrootsgardendesign.com)

Fort Collins, CO (970) 237-1374