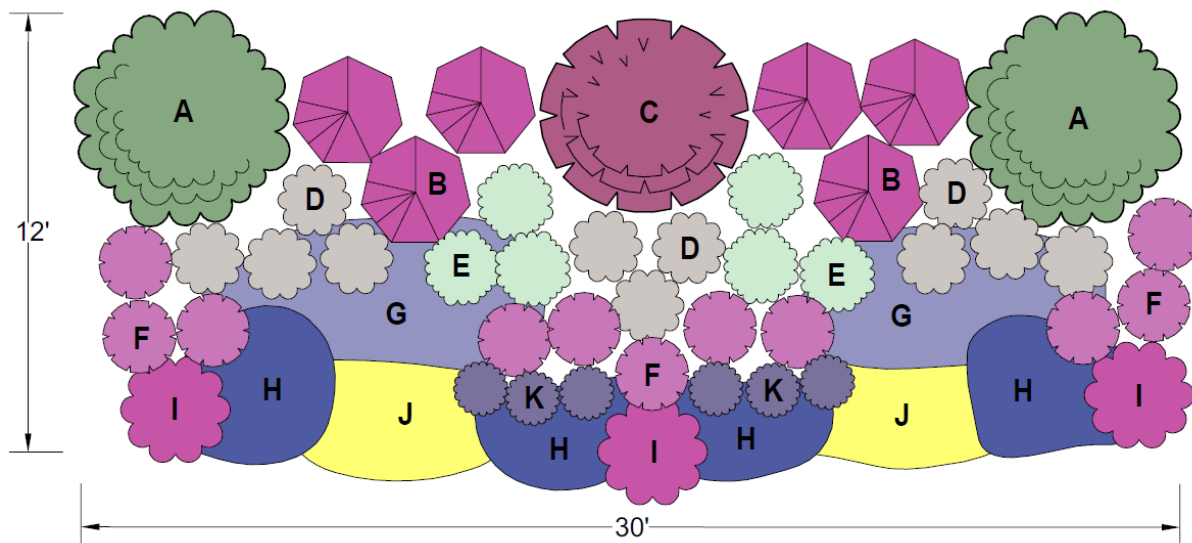


## WATERWISE COTTAGE

This garden features soft colors and textures, blended with silver foliage. Shrubs and easy-care perennials that look equally good out of bloom anchor the planting, while flowers ebb and flow from spring through fall. For additional early color, consider planting the bulbs listed amid the lower-growing plants in the foreground. To add interest the first couple of years in the area where the shrubs are filling in, consider planting the short-lived plants listed for that purpose. This is also a superb bee-attracting garden, and several of the plants offer fragrant flowers and foliage. Most but not all of the plants are deer-resistant. This design can be used as a perimeter planting: just repeat for whatever length is necessary. It can also be widened into a broader bed with the larger plants in the center or spine by planting its mirror image on the other side. All the plants are sun-loving and drought-tolerant, growing best in a well-drained soil and need little or no amendment.



## PLANT LIST:

Plant Select® plants are in bold

- A. Cheyenne® Mock Orange -or- Blue Velvet® Honeysuckle** (2)
- B. Sonoran Sunset® Hyssop -or- Blue Blazes Hyssop** (6)
- C. Redleaf Rose -or- Silver Fountain Butterfly Bush** (1)
- D. Silver Sage -or- Giant Lamb's Ears** (11)
- E. Dalmatian Daisy -or- Anthea Yarrow** (6)
- F. Shadow Mountain® Penstemon -or- Red Rocks® Penstemon** (11)
- G. Little Trudy® Catmint (14) -or- Select Blue Catmint** (10)
- H. Platinum® Sage -or- Silverton® Bluemat Penstemon** (20)
- I. Winecups (3) -or- Table Mountain® Ice Plant** (15)
- J. 'Shimmer' evening primrose (10) -or- Silver Blade® Evening Primrose** (6)
- K. Purple Mountain® Sun Daisy -or- Compact English Lavender** (6)

### Additional Plants:

- **Corsican Violet** (12) randomly in front 2' of bed to self-sow year after year

If desired, fill in around shrubs with the following short-lived plants while the shrubs grow to size:

- **Red Feathers** (9)
- **Prairie Jewel® Penstemon** (9)
- **Grand Mesa Penstemon** (9)
- **Moon Carrot** (9)

### Bulbs:

- **Star of Persia** (25)
- **Purple Snow Iris** (50)
- **Soft Blue Grape Hyacinth** (50)
- **Grecian Windflower** (50)
- **Lipstick Tulip** (50)

Find more designs and inspiration at [plantselect.org](http://plantselect.org)!

### Designer Lauren Springer Ogden

Lauren Springer Ogden designs both public and private gardens. Her book *The Undaunted Garden* is the mountain region's all-time best-selling garden book. She also coauthored the award-winning *Plant-Driven Design* and *Passionate Gardening*. She has also introduced numerous plants to the nursery trade, and Lauren and her work have been featured in national and international publications, and on radio and television.

[www.plantdrivendesign.com](http://www.plantdrivendesign.com)

