

SIMPLE SOLUTIONS FOR SMALL SPACES

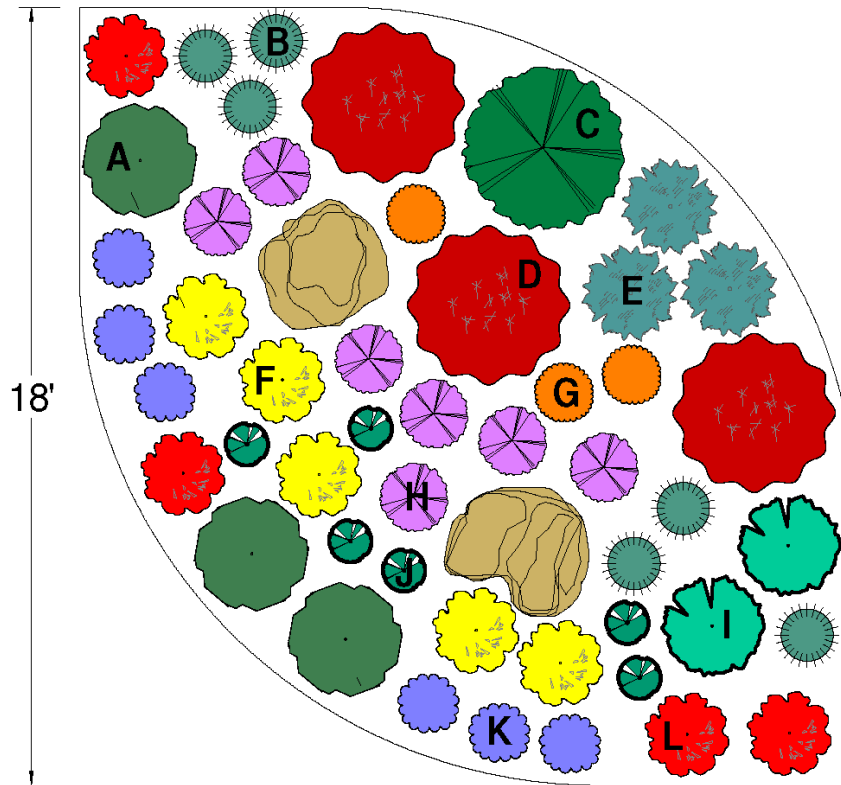
Waterwise designs created for smaller areas of your landscape.
For larger areas, repeat the design for whatever length is necessary.

CORNER LOT CURB APPEAL

Big and bold describes this garden for corner lots. Full of color, texture and continuous bloom, it is sure to be a 4-season stunner.

This is a garden that can be enjoyed from the home as well as the street.

All of the plants in this design are waterwise once established and require very little care. Give it full sun, and enjoy the seasonal beauty this garden will provide.



SIMPLE PLANT LIST:

- A. Avalanche sun daisy (3)
- B. Standing Ovation little bluestem (6)
- C. Fernbush (1)
- D. WINDWALKER[®] royal red salvia (3)
- E. WINDWALKER[®] big bluestem (3)
- F. KANNAH CREEK[®] buckwheat (5)
- G. CORONADO[®] hyssop (3)
- H. SHADOW MOUNTAIN[®] penstemon (7)
- I. Curly leaf sea kale (2)
- J. Turquoise Tails blue sedum (6)
- K. LITTLE TRUDY[®] catmint (6)
- L. RED MOUNTAIN[®] Flame ice plant (4)

SIMPLE.
SMART.
STUNNING.



Designer: Carla Tews

Carla Tews is the owner/operator of Green Roots Garden Design. As a horticulturist, garden designer and conservationist, she focuses on building sustainable landscapes and pollinator friendly habitats for residential and commercial clients along the northern Colorado Front Range.

www.greenrootsgardendesign.com

Fort Collins, CO (970) 237-1374