

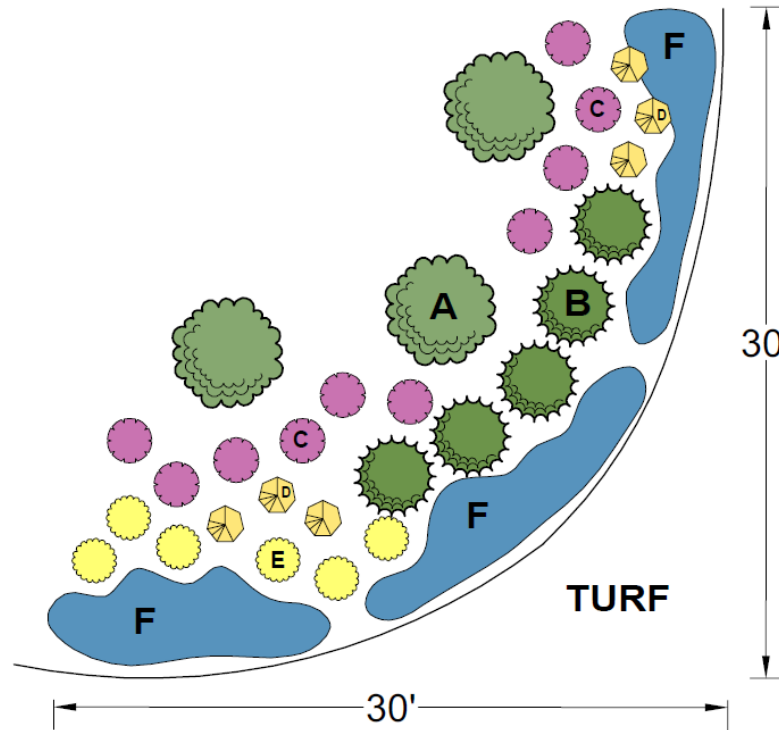


Plant Select[®]
plant smarter

XERISCAPE DESIGN SOLUTIONS

DRY SHADE

Low-water gardens for shade are a bit more challenging to design than their sunnier counterparts because many plants that grow naturally in shady spots are found in woodlands with regular moisture. This garden incorporates western natives and plants from around the world that are naturally adapted to dry shade. Plant the veronicas in drifts along the front of the border to fill areas between the perennial flowers and lawn area. These same plants can be combined in smaller quantities for smaller areas.



PLANT LIST:

Plant Select[®] plants are in bold

A. Cheyenne[®] Mock Orange -or- Waxflower (3)

B. Mountain Lover (5)

C. Cashmere Sage -or- Plumbago (10)

D. Denver Gold[®] Columbine -or- Perennial Foxglove (6)

E. Variegated Yellow Archangel (6)

F. Crystal River[®] Veronica -or- Woolly Veronica (50+)

Find more designs and inspiration at plantselect.org!



Designer Tonya Dunn

Garden Thyme, Inc. is a dedicated team of caring professionals in northern Colorado providing complete garden & grounds landscaping services with an emphasis on horticulture. We have established the regional standard of excellence for landscape gardening, defined unsurpassed customer service, and recognize that client loyalty is a testimony to our consistent performance.

www.gardenthyme.net

info@gardenthyme.net

Fort Collins, CO (970) 416-9000