

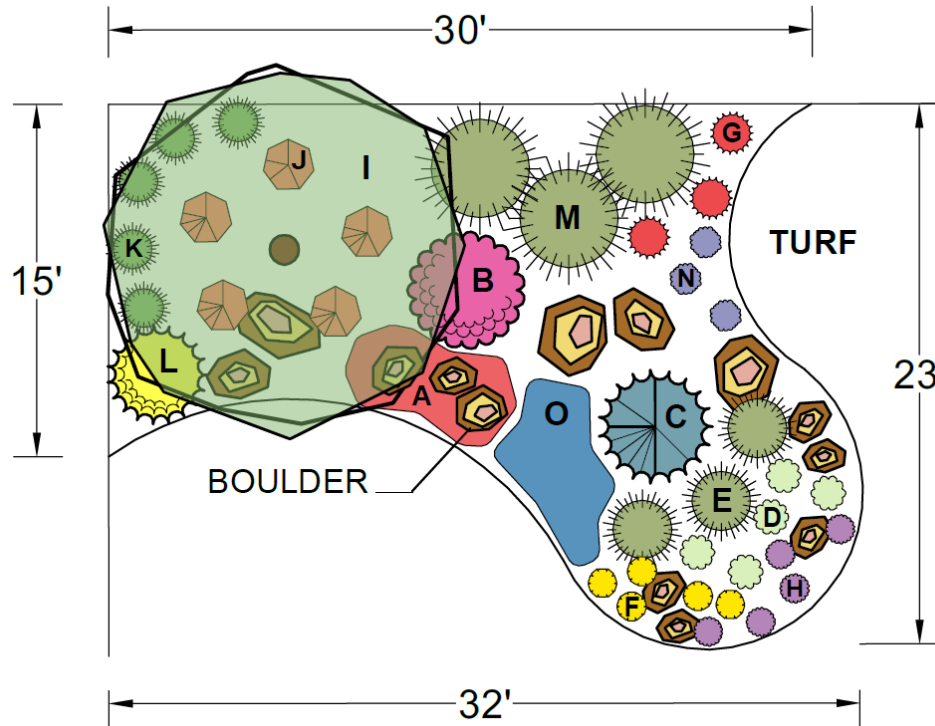


Plant Select®
plant smarter

XERISCAPE DESIGN SOLUTIONS

FOUR SEASON SENSATION

This garden represents a partial conversion of lawn to garden. Reshaping the existing lawn using a curvilinear approach adds flow and movement. Ornamental and coniferous trees provide height, shade and winter interest without interfering excessively with the views. This once water-hogging space is now a lush garden with plants that provide four season beauty, color and interest; thrive in low-water, clay soil and full sun conditions; and attract butterflies and hummingbirds. Drip irrigation and organic mulch, along with proper plant selection, aid in long-term water conservation.



PLANT LIST:

All plants are Plant Select® plants

- A. Fire Spinner™ Ice Plant **-or-** Lavender Ice Ice Plant (7)
- B. Ruby Voodoo Rose **-or-** Redleaf Rose (1)
- C. Weeping White Spruce (1)
- D. Avalanche White Sun Daisy **-or-** Golden Storksbill (5)
- E. Blonde Ambition Blue Grama Grass **-or-** Korean Feather Reed Grass (3)
- F. Colorado Gold® gazania **-or-** Chocolate Flower (5)
- G. Red Birds in a Tree **-or-** Bridges' Penstemon (3)
- H. Valley Lavender® Plains Verbena **-or-** Winecups (5)
- I. Russian Hawthorn **-or-** Hot Wings® Tatarian Maple (1)
- J. Orange Carpet® Hummingbird Trumpet (5)
- K. Korean Feather Reed Grass (5)
- L. Spanish Gold Broom **-or-** Baby Blue Rabbitbrush (1)
- M. Giant Sacaton (3)
- N. Little Trudy® Catmint **-or-** Shadow Mountain® Penstemon (3)
- O. Crystal River® Veronica **-or-** Turkish Veronica (5)



Designer Tanya Fisher

President of Colorado Vista Landscape Design, Inc. since 2003, Tanya Fisher provides high quality and sustainable landscape design plans and horticulture consulting for residential, community and commercial landscapes in the northern Colorado region.

ColoradoVista@comcast.net

www.ColoradoVista.com

Windsor, CO (970) 231-3088



**Find more designs and inspiration
at plantselect.org!**